



**Coalfields
Regeneration
Trust**

BUILDING PROSPERITY & OPPORTUNITY

ANNUAL REPORT 2024-2025



Ariennir gan
Lywodraeth Cymru
Funded by
Welsh Government



OUR IMPACT - 2024/25

The Coalfields Regeneration Trust (CRT) is the only community wealth building charity dedicated to the regeneration of Britain's coalfield communities. For over 25 years, the CRT has worked with communities to deliver a breadth of projects creating opportunities for people, strengthening the role of community organisations and identifying place based solutions responsive to the challenges still experienced in former coalmining towns and villages. To support delivery in England, the CRT has developed an innovative community wealth-building model generating sustainable income to deliver both social and economic value. Enabled by engaging key stakeholders, partners and, most importantly the communities, activities delivered are personalised to meet the needs of the people, the organisations and the place. CRT is keen to implement this sustainable funding and regeneration model in the former coalfield communities of South Wales, the poorest region in the UK, but this is subject to funding.

Working in partnership with Welsh Government, during 2024-25 Coalfields Regeneration Trust has continued to support people living in former coalfield communities. The challenges of creating well-paid employment opportunities and addressing healthy inequalities continue to blight coalfield communities.

Our communities face crisis after crisis, such as the cost of living, inflation, and sluggish economic growth. These disproportionately impact the poorest households resulting in additional pressures in communities and on the community organisations that support them. However, through it all we have continued to see the resilience of coalfield communities' who rise to meet these challenges, with the support of the Trust's highly dedicated, albeit small team, working across 12 local authority areas. We have continued to support people and community organisations to build resourcefulness and capacity, resulting in improved health and well-being, skills and employment opportunities in the poorest communities of the UK.

CRT25 Senedd Event – A new Vision for Coalfield Communities

A Senedd event in January 2025, sponsored by Mick Antoniw MS, provided an opportunity to highlight the impact of CRT on people and places and raise awareness of the challenges and how we can help coalfield communities build a brighter future through a community wealth-building approach.

This event was an opportunity to inspire change by bringing together key people, partners and supporters who believe in the power of the coalfield community. It highlighted CRT's role as an enabler and connector (over 25 years), working with communities and partners to maximize resource for effective socio-economic change. CRT has achieved so much with limited resources which is supported by the CLES research.

Welsh Government Support

Welsh Government has supported CRT for 25 years. CRT fully recognises the importance of Welsh Government support for the work it does, which enables CRT to lever further investment, resources and services into our communities. CRT has a significant contribution to make demonstrating how social and physical economic regeneration can complement each other to good effect in local communities, utilising both strategic partnerships and community wealth building approaches.



State of the Coalfields 2024, produced by Sheffield Hallam University, shows 40 years on from the Miners' Strike and subsequent pit closure programme of the 1980s and 1990s, many former coalfield communities are still affected by the economic and social consequences of these changes. The report highlights that the South Wales former coalfield region is a laggard in recovering from the loss of the coal mining industry, with a shortage of locally-based and good-quality jobs along with significant health issues (one in five adults of working age in South Wales coalfields are claiming out-of-work benefits) impacting the region.

CRT is calling on leaders' at all political levels, and leaders in coalfield communities to work with us to expand our community wealth-building model to generate jobs, upskill and address health and well-being issues to enable coalfield communities to reach their full potential.¹

In early 2025, Welsh Government confirmed continued funding for CRT, with an uplift in funding to £600,000 for 2025/26 (an annual increase of £150,000) and a commitment, in principle, to fund CRT for an additional 2 years.

2024-25 The Year in Numbers

Output	Planned Totals Across all programmes
Number of jobs safeguarded/created	15.40
Number of people assisted into work	4.00
Number of people assisted in skills development	205.00
Number of people gaining a qualification (level 1 and 2)	51.00
Number of community facilities created/improved including Welfare Halls and energy efficiency measures	18.00
Number of asset transfers supported	43.00
Number of new or improved services	32.00
Number of people participating in healthy lifestyle activities	1411.00
Number of new volunteers	56.00
Number of social enterprises supported/created	67.00
Number of community groups supported	17.00

CRT has exceeded the targets set for 92% of the output areas. The output target profiled for the number of people assisted into work (40% achieved) for the Welsh Business Plan 2022-2025 was set when the Kickstart Scheme was in place, and we were not aware that it was to be discontinued. However, overall the outputs demonstrate CRT has delivered excellent value for money during the period.

2024/25 Highlights

CRT Together has supported 219 people affected by cancer through a what matters to me conversations which has linked them to non-clinical support to tackle financial, well-being, transport and other concerns that often follow a cancer diagnosis.

CRT continues to work in partnership to support Town Centre regeneration to tackle complex issues including working with The Vacant Shops Academy to revive town centres in Blaenau Gwent and Smart Money Cymru Community Bank to provide access to ethical financial services due to bank closures.

CRT continues to enable community led regeneration in Penywaun and Cefn Golau, Tredegar, two of the most deprived communities (based on the IMD) in Wales. This includes developing training and volunteering opportunities as steps to employment. Plus developing community ownership and services.

CRT continues to support community ownership, which includes the development of community assets, through supporting technical reports (funded by Blaenau Gwent CBC via the UK Government Shared Prosperity Fund). 43 organisations have been provided with asset transfer support.

Support on complex Community Asset Transfers has included: sharing good practice approaches to CAT with Local Authorities, including Caerphilly CBC (in relation to large scale offloading of community centres, leisure centres, libraries, sports facilities, etc.) and Merthyr Tydfil CBC (in relation to Aberfan Community Centre); supporting Miners Welfare Halls and recreational grounds.

Continued to champion a community wealth-building approach in relation to infrastructure developments, including renewable energy schemes and industrial developments, linked to strategic regeneration sites in the Heads of the Valleys.

The launch of CRT new Strategy, setting out the charity's vision as a community wealth-building charity and its key missions.

Game On Wales, FAW Fun Football Provider of the Year, has inspired over 1,300 participants from coalfield communities to engage in sporting activities (including almost 500 teenage boys and girls and 400 people aged 50+). Plus almost £700k external funding secured to enable grassroots sports clubs to upgrade their facilities.

CRT has led on a partnership bid to the Welsh Government's SBRI Innovation programme to develop a mapping tool of post-industrial land, including coal tips, outlining site opportunities and constraints.



Investing in Coalfield Communities

In 2024-25 Welsh Government supported CRT work in Wales with £290,000 funding core costs. This support is vital in enabling us to lever in further investment to coalfield communities in Wales. However, given the significant increase in inflation and a flat rate grant award for a 3-year period, we were required to seek and secure additional funding, which is resource-intensive. In 2024/25 we levered in an additional £530,000.

This included:

Investing in Community Assets

£43,700 invested to support 24 organisations with technical surveys (e.g. fire risk assessments, planned preventative maintenance plans, energy audits, etc.). This has enabled groups to lever in a further £116k in funding.

Investing in health and well-being

£425k to deliver the CRT Together Improving the Cancer Journey programme, in partnership with Macmillan Cancer Support.

Other sources of income:

Invest Local fund holder fee, strategic development support and management fee £8,000
Bridgend CBC Community Asset Transfer contract £9,000
FAW Trust £6,400



HWB CANA, PENYWAUN

CRT STRATEGY

2024 saw the launch of CRT's new Strategy, setting out the charity's vision as a community wealth-building charity. Our strategy focuses on five key missions—Community, Health, Skills, Jobs, and Climate.

Community

Supporting communities is a strategic focus of the development support team with the aim of building community-led action. This work includes: our long-term community-led regeneration work in Penywaun and Cefn Golau; third sector capacity building through funding; governance support; funding advice and training.

CRT Support

The Development Team have been very busy providing support during 2024-25, with the 5 team members completing:

- 313 Development meetings which includes 39 social enterprises supported with more than 7 hours of support.
- 252 strategic meetings.
- Over 400 general enquiries and 276 grant enquiries processed.

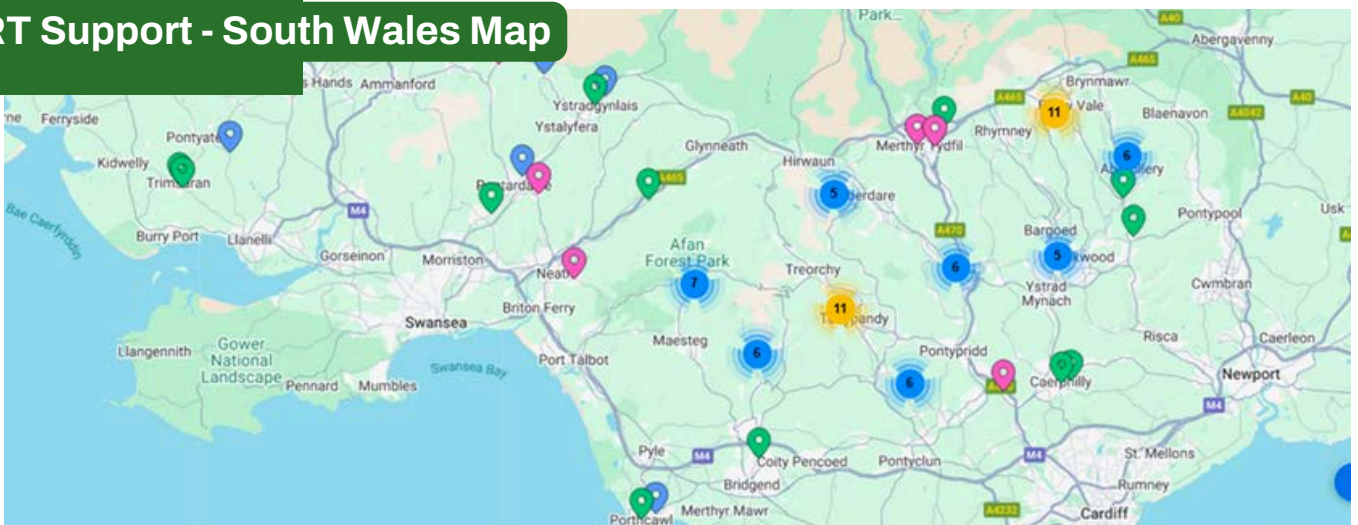
“Coalfields Regeneration Trust has supported Cymru Creation in many ways. Always happy to help with not just grants, but signposting us to external help and professionals who have provided information vital to the running of the charity. The staff are the best people you could wish to speak to.”

“Our community hall would have closed decades ago if not for this organisation, they provided funding when we had no other avenue of financial support.”

CRT Support - North Wales Map



CRT Support - South Wales Map



Funding & Development Support Key:

Blue = 21 grants awarded.

Green = 52 organisations received bespoke development support (over 7 hours).

Pink = 14 Sports teams received a Game On Cymru Kit Grant.

Purple = 2 organisations received Fast Track funding for emergency work.

Coalfields Community Grant 2024-25

The CRT Community Grant supports all of our strategic missions: Community, Health, Skills, Jobs, and Climate. The programme supports community organisations in delivering local actions in response to those missions.

£139,500 awarded to 23 community organisations and social enterprises.

£112,722 match-funding secured

Every £1 invested has secured an additional £0.75 of match funding

CRT Funding = 55% of the project costs

Grant Awards 2024/25

Coalfields Community Grant Awards:

Organisation	Project	Total Project Cost	CRT Contribution	CRT Capital Contribution	CRT Revenue Contribution
Ray Of Light Cancer Support	Solar Rays Of Strength	£ 7,440.00	£ 7,000.00	£ 7,000.00	£ -
Old School Hub	Old School Repair Shop	£ 7,444.12	£ 7,000.00	£ 7,000.00	£ -
Behaviour Support Hub	Neurodiverse Futures	£ 5,944.00	£ 5,944.00	-	£ 5,944.00
Neuadd Cwmllynfell Hall	Centre Manager	£ 32,172.66	£ 7,000.00		£ 7,000.00
Tillery Action for You Ltd	Community Growing	£ 18,260.70	£ 6,256.50	£ 6,256.50	£ -
First Newton Llantwit Scout Group	Scout Hall Floor	£ 9,237.00	£ 7,000.00	£ 7,000.00	
Baobab CIC	Growing Edibles for the Community	£ 12,593.60	£ 6,296.80	£ 348.00	£ 5,948.80
BGFM	Outside Broadcasting Equipment	£ 6,998.27	£ 6,998.27		£ 6,998.27
Blaina Community Centre	Boiler Replacement	£ 8,688.00	£ 7,000.00	£ 7,000.00	£ -
Ogmore Valley Dragons Boxing Club	Rewiring and re-rendering	£ 35,000.00	£ 7,000.00	£ 7,000.00	£ -
Glyncorrwg RFC	Solar Panels	£ 21,995.00	£ 7,000.00	£ 7,000.00	£ -
Cynon Valley Organic Adventures Ltd	Respite and Inclusive Facilities	£ 5,295.30	£ 5,295.30	£ 4,984.30	£ 311.00
Darran Las Community Building	Roller Shutters	£ 2,160.00	£ 2,000.00	£ 2,000.00	£ -
Mount Elim Evangelical Church	Kitchen Facilities	£18,917.50	£7,000.00	£ 7,000.00	
Ebbw Vale Indoor Cricket Club	Roof Repair	£ 4,140.00	£ 4,000.00	£ 4,000.00	£ -
Noddfa Community Centre	Replacement Heating System	£ 6,850.00	£ 6,850.00	£ 6,850.00	£ -
Ystradgynlais Community Centre	CCTV	£ 9,900.00	£ 7,000.00	£ 7,000.00	£ -
Tredegar Orpheus Choir	Fire Alarm System	£ 8,304.00	£ 7,000.00	£ 7,000.00	£ -
KidZ R Us	Rainwater Goods	£ 3,250.00	£ 2,000.00	£ 2,000.00	£ -
Omidaze	The Talking Shop Blackwood	£ 7,200.00	£ 7,000.00		£ 7,000.00
Realskillz	Horse Box Refurb training	£ 6,945.00	£ 6,945.00		£ 6,945.00
Coalfield Flower Farm	Coalfield Flower Farm Training	£ 2,828.30	£ 2,828.30		£ 2,828.30
Llanelli and Mynydd Mawr Railway	2 Part Time Roles	£ 10,483.20	£ 7,000.00		£ 7,000.00
		£ 252,046.65	£ 139,414.17	£ 89,438.80	£ 49,975.37

CRT is recognised as the lead community asset transfer and support agency in Wales, both at a policy level (nationally and locally) plus at a grass-roots level, working with communities to safeguard local assets where this is viable and meets a local need. CRT has also taken on 3 community assets so we understand the community asset transfer process and its challenges at various levels. CRT continues to work with the Community Ownership Group and Cardiff University, which influences the recently established Community Asset Commission. We also work in partnership and co-ordinate asset transfer support with partner agencies to maximise resource on this complex topic. Partners include: local authorities, Cwmpas, WCVA, local CVCs, Welsh Sports Association, FAW, WRU, funders, etc. In 2024-25 CRT Development Team supported 43 community asset transfers, which is intensive and complex support.

Support on complex Community Asset Transfers has included: sharing good practice approaches to CAT with Local Authorities, including Caerphilly CBC (in relation to large scale offloading of community centres, leisure centres, libraries, sports facilities, etc.) and Merthyr Tydfil CBC (in relation to Aberfan Community Centre); supporting Miners Welfare Halls and recreational grounds.

CRT utilises its expertise to shape community asset transfer policy, highlighting the need for long-term, flexible support to sustain assets and services in the poorest communities. These assets are essential for engagement and connectivity and the delivery of key services, support and training. Communities which lack these assets are less resilient and lead to poorer social and economic outcomes. [The Less Resilient Areas \(LRA\) Index](#) identifies regions with fewer community assets, higher deprivation, and greater vulnerabilities. The South Wales Valleys contain the highest proportion of LRA's yet they receive less funding than the national average, and the average for other deprived areas and have less third sector infrastructure and less social capacity to address these issues. [OCSI CRI and 'less resilient areas' in Wales Technical Report](#)

Progress following the Senedd Local Government & Housing Committees inquiry report on Community Assets has been slow. The CRT calls for immediate action from Welsh Government to provide an interim support structure while the longer term proposals are developed to safeguard community assets. Alongside support there needs to be a flexible fund covering revenue, capital and professional costs would ensure limited resources are targeted at those communities with the greatest need. **11**

The CRT would urge the targeting of support to deprived communities where barriers to community ownership and management are greater due to lower community capacity (e.g. lower Trustee number and lower skill levels) to enable capacity building and retention of assets in communities where they are most needed.

CRT Place

Town Centres

CRT continues to work across sectors to help regenerate town centres. As a result of our track record in asset development we are members of the Tredegar Advisory Board, which fosters collaborative working across the private, public and third sector. This includes developing the strategic vision for the Town Centre with consideration for: the sustainable economy of the town centre; improving recreational and social offer in Town Centre; urban design and public realm. Members include the Business Forum, local authority, Aneurin Leisure Trust, the Town Council, faith groups and social enterprises.

CRT's role within the town includes supporting the development of services, social enterprise and community organization plus managing 2 community facilities on the High Street – these are Aneurin Bevan House and 10 The Circle. 10 The Circle provides a heritage and business centre, integrated with the local museum, schools and wider heritage initiatives in the County, a new and interesting destination has been created for the Town. Aneurin Bevan House and 10 The Circle provide the local community with a broad range of services and opportunities delivered by partners, which include volunteering and employment opportunities, employment support services, heritage and recreational opportunities, creative arts, community transport plus ethical financial services.

During 2024/25 we have worked with Abertillery Town Council to access specialist mentor advice on the development of community owned renewable energy and worked with Abertillery Aspirations on Town Centre improvements. This includes the provision of apprenticeships, the development of a new creative industry base by Cymru Creations, access to ethical and affordable financial services working in partnership with Smart Money Cymru Community Bank and continuing to support the development of Cefn Golau Together.

Smart Money Cymru Community Bank have a high street branch operating from the ground-floor of Aneurin Bevan House. 2024 saw the last high street bank on Tredegar High Street close, we anticipate demand for Smart Money's services and membership growing. CRT is keen to support the growth of credit union services in former coalfield communities, including their presence on high streets.

Cynon Valley Development Trust - Creating jobs and economic value from our anchor institutions.

During her time as MP for the Cynon Valley, Beth Winter convened a Task and Finish Group to investigate the potential for long-term economic growth within the Cynon Valley. The Bevan Foundation was commissioned to consider how best to ensure a lasting recovery for the Cynon Valley following the Covid 19 pandemic. Amongst its findings the Bevan Foundation report recommended the establishment of a development trust in the Cynon Valley, it said:

“We recommend the creation of a Cynon Valley Development Trust to stimulate community-based enterprises, with strong focus on the green economy. There are plentiful opportunities to do so, from the potential in the circular economy, expanding the food offer, advising on energy efficiency, repurposing unused premises, and meeting health and wellbeing needs. There are already successful social enterprises in the area, and much more could be achieved with active support. The Trust would need to be staffed by people with business expertise and work closely with the local authority and other business organisations.”

A feasibility study developed by Mark Lang and Dave Adamson on the formation of a Cynon Valley Development Trust has resulted in the formation of a Task and Finish Group. The Task and Finish Group is made up of a number of economic anchor institutions who deliver services across RCT including:

- **Coalfields Regeneration Trust**
- **Bryncynon Strategy**
- **Trivallis Communtiy Housing**
- **Coleg Y Cymoedd**
- **Cwmpas**
- **Community Energy Wales**
- **Age Connects Morgannwg**
- **Cynon Taf Housing Association**
- **RCT CBC**
- **Tower Colliery**
- **Common Nature**

The next steps for the task and finish group include the formation of a Community Benefit Society.

This will create a formal legal structure, required to enable the Development Trust to pursue community ownership opportunities, such as community-owned energy and social enterprise development. They have identified potential opportunities for development at the Tower Colliery site, a key strategic regeneration site following the completion of the Heads of the Valleys road in 2025. Hwb Cana provides a training and resource centre to complement future developments, linking local residents to upskilling and employment opportunities, which will become available as the Tower site is reclaimed and re-developed.

Long-term Community-Led Regeneration

CRT Place continues to provide intensive targeted support to communities where regeneration initiatives have had limited long term impact. This includes Cefn Golau in Tredegar and Penywaun in Rhondda Cynon Taff. CRT's asset development work has levered in £1m to the communities of Tredegar and Penywaun, this does not include the social value and return on investment as a result of the services provided.

Cefn Golau Together, Tredegar

CRT's development support work has resulted in closer working with Tai Calon Community Housing, who with CRT support, have transferred on a freehold basis land to Cefn Golau Together, to develop a community facility and community growing allotments. An architect has been appointed to support community engagement in the purpose and design of a new community centre. The pre-planning process has been completed. The local community and stakeholders have been engaged through the community centre's development process and agree that this will be transformational for the community, which is one of the most deprived communities in Wales. CRT has also supported the development of a Food Pantry which is supported by 4 regular volunteers and supports over 40 families each week. Sport and snack sessions also run during school holidays, to support children impacted by school holiday food poverty.

Penywaun

Hwb Cana has provided a number of services and training opportunities during 2024/25. Training focuses on building confidence, supporting well-being, growing practical skills, encouraging creativity to improve employability. CSCS training has been really successful and highlighted the low levels of literacy which requires pre-course sign up support, which enabled more participants to gain their CSCS cards, essential for construction employment. We have also hosted, with partners such as Careers Wales, the local CVC, RCT Work and Skills, a number of employment events to connect coal people to local volunteering, skills and job opportunities. Training is provided in partnership with Adult Learning Wales, Communities for Work, New Horizons, Coleg y Cymoedd and Menter Iaith RCT. The Hwb is also the base for the new CRT Together cancer support programme, delivered in partnership with Macmillan Cancer Support.



CRT is now the fund-holder for Penywaun Forward Together (funded via Invest Local) which strengthens our partnership working and our place-based community-led regeneration work. Funding will be utilised to support the Penywaun Forward Together Driving Change Plan which prioritises developing and supporting community services and community assets.

CRT continues to work closely with Penywaun Forward Together Partnership and North Cynon Neighbourhood Network to ensure that we are aware of provision, can signpost accordingly and Hwb Cana complements other provision.

In response to the high levels of indebtedness within coalfield communities the CRT has supported credit union development since 1999. CRT continued to work in partnership with Smart Money Cymru Community Bank in 2024/25. The Poverty Premium highlights that wealth retention is a real challenge for poorer communities. Hwb Cana was developed to provide a new and accessible credit union office for Smart Money Community Bank, their first to serve the Cynon Valley, providing members with access to affordable financial services and working towards the vision of creating a Credit Union Village. They hope to replicate the success of their first branch in Blaenau Gwent, located at Aneurin Bevan House (another CRT building) which has seen their membership boom to 1,800. Remarkably, 12.3% of residents of Penywaun are now credit union members. CRT continues to work with partners to develop local access to services, including affordable financial services.

Community Wealth-Building - Property Investment Proposal

Creating local employment opportunities is a priority for CRT, given the poor job density in South and North Wales coalfield communities, with 46 jobs per 100 people of working age, compared to the UK average of 73 per 100) (Steve Fothergill, et al. (2024)). In response, CRT's developed light industrial sites in England and we are working tirelessly to develop this model in former coalfield communities in Wales.

CRT's industrial development model is unique. The proposal is based on CRT owning the site and developing a mix of private and third sector local businesses. Whilst also providing business development support to help grow and nurture local business, with partners support, creating local jobs. In addition, profits from the income generated from the site will be recycled to support business growth such as training and apprenticeship and grants for local community groups. Through supporting the growth of local businesses and recycling some of the income generated, this model supports wealth retention within former coalfield communities.

CLES

The Centre for Local Economic Strategies (CLES) was commissioned to evaluate the community wealth-building model of the CRT. CRT's charitable, economic and social impacts were analysed to illustrate the wider impacts of the Trust's work. CLES finds that CRT's model represents an innovative fusion of charitable objectives and commercial operations, creating sustainable economic and social value not only through the charitable activities that it funds but also by addressing a sector historically neglected by larger commercial developers – the development of high quality small to medium light industrial unites in former coalfield communities.

“CRT's ability to translate national objectives into locally tailored solutions makes it an invaluable partner in bridging the gap between policy and practice, ensuring regeneration efforts meet the specific needs of coalfield communities. Its various activities directly contribute to job creation, addressing health inequalities, business innovation, skills development and economic growth in former coalfield communities. There are opportunities to develop these further through a community wealth-building lens and expanding the CRT Property Investment Ltd.'s role in local development”.

The economic benefit of the CRT portfolio includes:

- **Estimated 3,495 jobs (1,593 direct and 1,902 are indirect and induced jobs)**
- **GVA generated by the direct, indirect and induced jobs are estimated to be £380million per annum.**
- **Estimated annual economic benefit of CRT charitable programmes in 2023 was £35.4million, compared to total invested the economic benefits amount to £7.50 per £1 spent.**
- **There is a real need for catalytic capital to enable CRT to deliver this model in former coalfield communities in Wales, providing high spec industrial units, enterprise and local jobs.**

CRT is clearly committed to investing in property in Wales. CRT Property Investment has purchased an industrial unit in Merthyr Tydfil. However, there is a need for catalytic capital to enable CRT to deliver this model in former coalfield communities in Wales, providing much needed modern business infrastructure, enabling enterprise development and local jobs.

In 2024 CRT approached Welsh Government (both the Housing and Local Government Department (who fund CRT) and the Economy Department) with a £15m endowment investment ask, to enable CRT's property investment company to develop industrial sites, which would create jobs and support the Trust's Community Wealth-Building work in the South Wales former coalfield communities. The investment would sustain CRT activity in Wales, reducing the need for on-going government funding. CRT met with the Housing and Local Government Department and the Economy Department to discuss the investment proposal.

Feedback from the Welsh Government Housing and Local Government Department was, due to financial pressures, their investment focus is Town Centre regeneration and new housing. Despite a positive meeting in early December with the Economy Department of Welsh Government to discuss the Proposal and highlight the Local Authorities support, they are unable to invest and suggested we seek investment via the Northern Valleys Initiative, and initial discussions have been positive. This is a proven model which we aim to accelerate at scale and investment would enable this. Further discussions with Northern Valleys Initiative regarding the investment structure are required.



HEALTH & WELL-BEING

CRT Game On

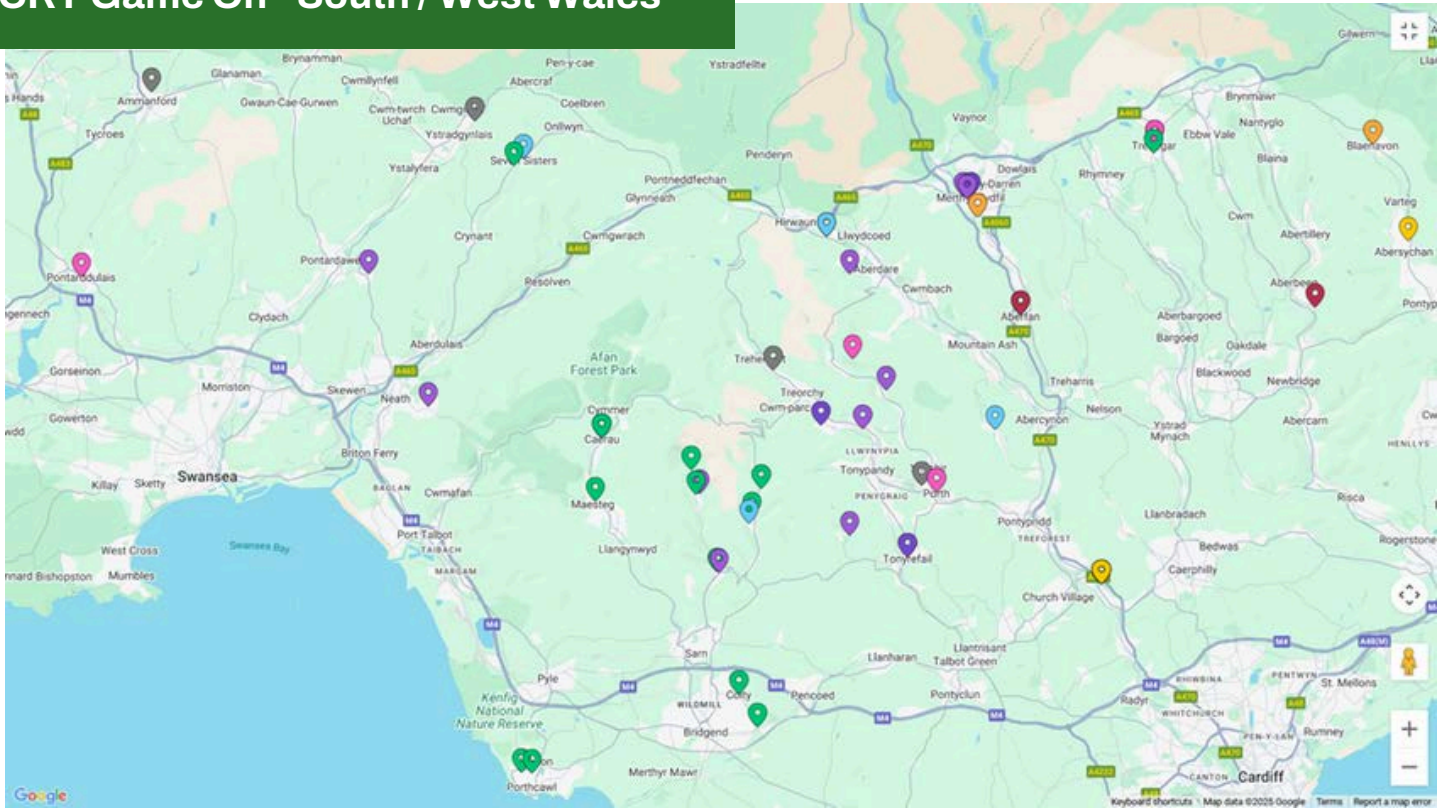
Providing on field and off field support to enable local access to good quality sports opportunities. This work and its impact was acknowledged when CRT Game on was awarded the FAW Fun Football Provider of the Year Award 2024. There has also been a strategic focus on building engagement amongst young women and we've seen our highest ever engagement with new teenage women sessions launched in Penywaun, Merthyr Tydfil and Wrexham. Off field support has included 14 community sports clubs supported with community asset transfers, supporting building community ownership and capacity building in former coalfield communities. CRT Game On Wales is highlighted as best practice in a Sport Wales study.

CRT Game On & Kit Grant

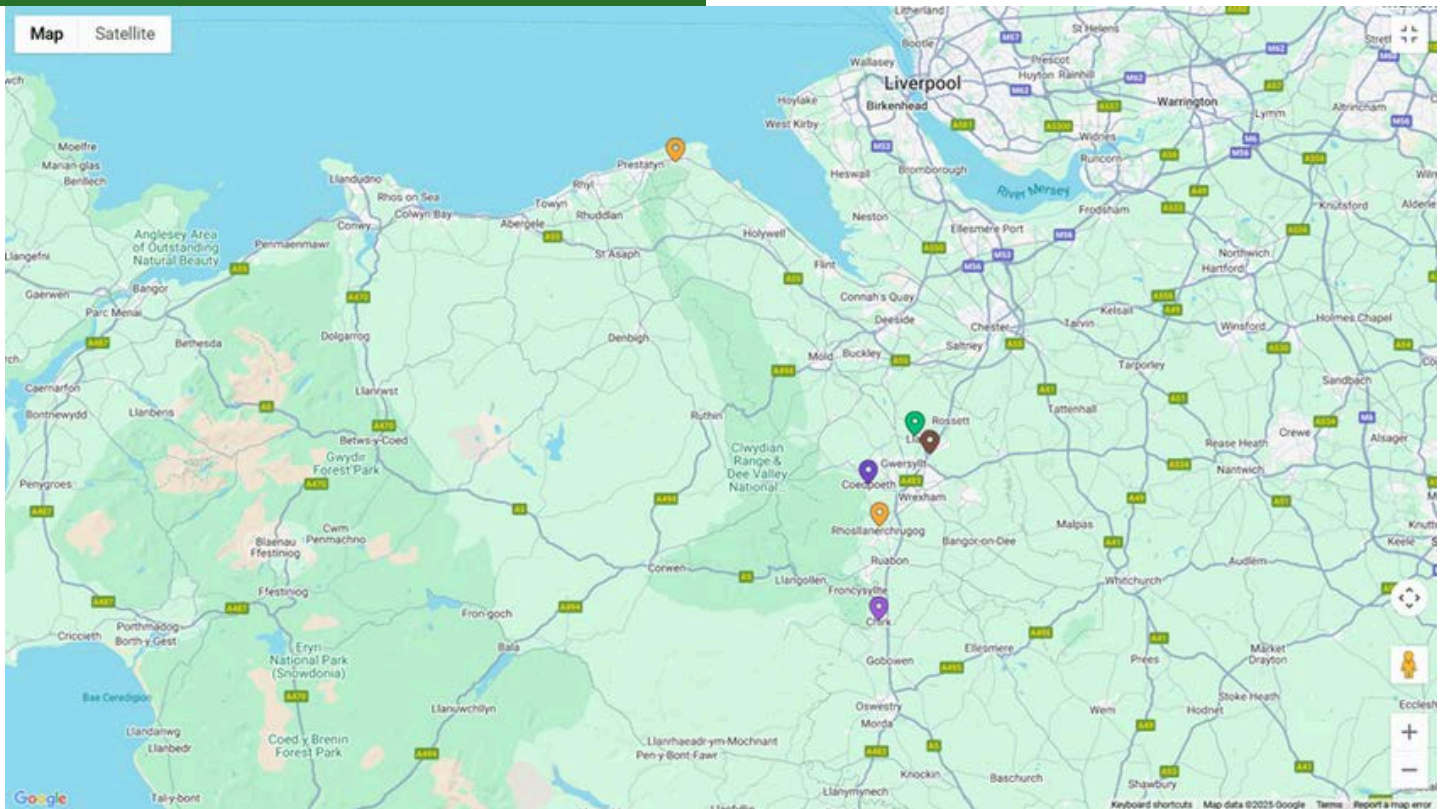
14 community sports clubs were awarded CRT Game On + Kit Grants, amounting to £10,500, to help increase/retain teenage participation in sport, benefitting 280 young people.

Sports Club	No. Young People Benefitting	Sport
Rhondda Paddlers	24	Paddle sport
South Wales Saints U14s Rugby league	20	Rugby League
Georgetown BGC U14s	16	Football
Bryn Rovers FC	18	Football
Celts Volleyball Club	40	Volleyball
Dare Valley Flyers	20	Netball
Cimla Juniors AFC	20	Football
Baili Glass FC U14 Girls	16	Football
Tredegar Town U13s	16	Football
Chirk Youth	17	Football
Llangeinor AFC u15 Girls	15	Football
Garw Valley Tennis	30	Tennis
Ferndale RFC	28	Rugby Union
Rhos FC	15	Football

CRT Game On - South / West Wales



CRT Game On - North Wales



The CRT Together Improving the Cancer Journey programme (CRT Together) is a strategic collaboration between The Coalfields Regeneration Trust (CRT) and Macmillan Cancer Support (Macmillan). The project aims to improve the experience of People Affected by Cancer (PABC) by providing tailored, non-clinical support across the Cwm Taf Morgannwg region. By working in partnership with third sector organisations, health and social care professionals, local authorities and other partners, CRT Together strives to address systemic health inequalities experienced by former Coalfield communities.

CRT Together Theory of Change:

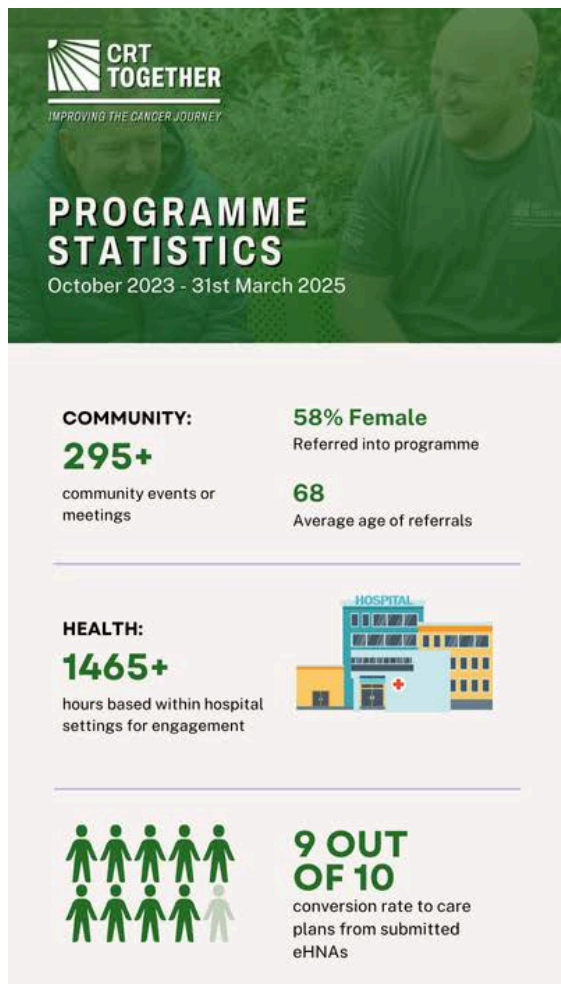


The programmes provides:

(For individuals) A one-to-one link worker to help people living with cancer access services to support their emotional, social and practical needs. A cancer diagnosis affects so much more than someone's health from worrying about paying the bills to its emotional impact.

(For communities) We offer a service shaped to the needs of coalfield communities, so everyone gets the best support available. We work with people living with cancer so that whoever you are, wherever you are, you can help influence cancer services.

(For partners) We champion, promote and support community cancer services. Coalfields Regeneration Trust and Macmillan Cancer Support are working in partnership to guide people living with cancer to those who are best placed to help them. Where there are gaps in provision, we empower communities to create their own services.



The most common support requirements for PABC are: Finance, housing, transport, benefits navigation.

The CRT team have received positive feedback across the different types of support they provide. These testimonies capture gratitude shared and highlight the role CRT Together plays in improving the quality of life of PABC:

“Thank you for your help. I feel like a weight has been lifted, and I now no longer worry about what might happen to my wife when I pass.”

I didn't even realise that organisations like Citizens Advice could help me with my Power of Attorney. This is something I know I need to get sorted, but kept putting off. I am grateful for your advice.”

This programme supports the delivery of the NHS Cancer Improvement Plan 2023-26 through: supporting cancer patients and improving services (improving patient experiences). Working together to make services better (key system-wide enablers) by improving information and intelligence on people affected by cancer in former coalfield towns and villages. This programme also supports proposals set-out in the Welsh Government's Transforming and Modernising Planned Care and Reducing NHS Waiting Lists Plan via: Patient prioritisation to minimise health inequalities. Building sustainable planned care capacity through the provision of support from a wider range of local services to help people stay well and provide better information and support to patients.

2025 saw the launch of new Strategies for both Macmillan and Coalfield. These strategies share key missions: tackling health inequalities, supporting those most in need and working co-productively with communities and partners to work together collectively in tackling complex and systemic health inequalities.



CRT Together - Breaking Barrier Fund

The fund aims to improve cancer support services, reinforcing the community engagement and partnership work already being conducted. The fund was developed to test and trial new solutions to barriers identified by PABC or local organisations who support them.

This is an important opportunity to build the capacity of local charities, and staff dedicate time to review feedback and help applicants consider how to improve their proposals. Stakeholders have praised the support provided by CRT during the application process.

The Fund has committed close to £40,000 to five projects to date:

Organisation	Project Name	Total Project Cost	Contribution (£, %)	No. of people supported	Project Summary
Signposted Cymru	Unity in Wellness	£16,400	£12,480 76%	20	Fast-response mental health and wellbeing services (within 48 hours), including therapy sessions, group support and workshops.
Ray of Light Cancer Support	Support Groups, Workshops & Bushcraft	£20,850	£10,000 48%	208	Offers support groups, creative workshops and bushcraft activities, promoting mental wellbeing and fostering community connection.
MOVE Against Cancer	5K Your Way - Maesteg	£2,728	£1,000 37%	20	Encourages physical activity through regular 5km runs, to improve physical and mental wellbeing.
Cancer Aid Merthyr Tydfil	Top to Toe Wellbeing Services	£50,018.34	£14,808.34 30%	234	Provides a hair dressing salon for people affected by cancer, by refurbishing the salon room and having a dedicated hairdresser as part of the service.
Llynfi Valley Cancer Support Group	Llynfi Valley Cancer Support Group	£2,660	£1,350 51%	15	Provides vital cancer support in the Llynfi Valley through regular group sessions and local resources, fostering a sense of community while reducing stigma and encouraging participation.
Total		£92,656.34	£39,638.34	497	

CLIMATE CHANGE

Supporting a just transition using a community wealth-building approach and tackling climate change through community-led action.

25% of the Welsh population live in former coalfield communities. The South Wales coalfield region is the poorest in the UK and climate change is likely to have a disproportionately negatively impact upon this region. Housing stock within former coalfield communities is likely to be more difficult and expensive to retrofit and to make more low carbon. Since 2020, CRT has supported 3 former coalfield communities, distributing grant funding to home-owners impacted by flooding so we are starting to see the impact of climate change in former coalfield communities. With a further 360 tips identified as 'high risk' of destabilisation in Wales it is imperative we meet our decarbonisation targets.

Reclamation of Brown-Field Sites

There are a number of post-industrial sites in the South Wales Valleys areas, which may have potential for development. The region remains amongst the most socio-economically deprived with spatial variations in health and well-being, education and economic prosperity.

Brownfield sites are often not considered suitable for development. Securing the long-term resilience of these sites and the wider post-industrial estate in Wales is an area of increasing focus, particularly with the effects of climate change which have the potential to significantly impact communities, such as disused coal tips.

CRT led an innovation bid to Welsh Government and were successful. This project involved a collaboration of partners including: The Mining Remediation Authority; Bridgend CBC and Welsh Government. In October 2024, we released an innovation challenge and subsequently appointed 4 solution providers to identify a scoping tool which will allow the user to assess the viability and potential to regenerate a specific site. Phase 1 will run to September 2025 and has involved stakeholders from across all sectors.

If successful, the next phase will be the implementation of this tool, which is envisaged as being available in the public domain, to enable developers to identify opportunities and leverage investment into coalfield communities. Developing brownfield sites should also reduce the development of greenfield land which aligns to the Well-Being of Future Generations Act, Planning Policy Wales and CRT's Community Wealth-Building Strategy.



Community Ownership & Benefit

CRT has been campaigning to ensure communities have an equitable share of the benefits and ownership associated with large-scale renewable developments. A large number of these developments are proposed for our coalfield communities in Wales with 14 (54%) wind farm proposals and 16 (44%) solar farms at various stages of development within the heart of the South Wales Valleys, which remains one of the most deprived areas in the UK (Levelling up the Coalfields APPG 2023).

Of the 14 proposed wind farms in our South Wales coalfield areas, if all are approved and a minimum of £5,000 per MW provided to a community fund (the industry standard recommended in 2015) this would equate to £3,257,500 per annum income into the most deprived region in UK (benefiting 25% of the Welsh population).

CRT has contributed to and welcomes the Institute of Welsh Affairs (IWA) report: Sharing power, spreading wealth: Towards an equitable energy transition for Wales (2024). CRT supports its recommendations: Welsh Government strengthening policy guidance on Community Benefit Funds (including a mandate of £8,000 per MW); accelerating community ownership of renewable projects; and development of a sovereign wealth fund to support the flow of wealth back into communities.

Some local authorities are developing community benefit policies and the report may help strengthen those policies already in place or assist in their development. We are keen to see the recommendations implemented at a local level initially as planning permission is often granted with very vague community benefit contributions, which could result in lost opportunities for coalfield communities (generally each scheme should provide hundreds of thousands per annum for the next 20+ years).

CRT will continue to lobby government, both national and local, plus public funders to drive forward the report recommendations.



Manifesto

The needs and challenges facing coalfield communities require bold and targeted solutions. The CRT feels that there are three overarching themes which could make a tangible difference to improving the lives of those living in coalfield communities.

These 3 themes of the CRT manifesto asks of the new Welsh Government these are:

1. Building a political infrastructure within Welsh Government to enable issues facing the one in four people living in the Welsh coalfields to be prioritised.
2. Delivering a successful Community Wealth Building approach to help ensure that wealth generated in the coalfields benefits those communities.
3. Tackling socio-economic inequalities by sustaining charitable services Industrial Communities Alliance (ICA) Wales.

Following on from the State of the Coalfields 2024 research (Steve Fothergill, et al. 2024), the ICA Wales (a membership body which is representative of local authorities in former industrial communities) is undertaking a study into how to tackle the persistent and complex challenges of economic and social regeneration in the South Wales Valleys.

The study will focus on economics and regeneration – employment, skills and transport mainly. Next Steps for the Valleys will review the up-to-date statistical evidence and data will be assembled for specific communities as well as for the Valleys as a whole.

However, the analysis will be rooted not only in the numbers, but also in lived experience. The study will try to get an understanding of the reality for communities across the area - what's really going on and what it's like to live there.

CRT in Wales has engaged and supported the study. The report will be utilised to influence government and highlight that the Valleys towns need special treatment because of their levels of poverty and deprivation.

Policy

As identified by CLES CRT has the ability to translate national objectives into locally tailored solutions, bridging the gap between policy and practice, ensuring regeneration efforts meet the specific needs of coalfield communities. We have utilised this approach to respond to various inquiries, including the Welsh Affairs Committee Inquiry on The environmental and economic legacy of Wales' industrial past; the UK Government Mining Legacy consultation, the Mining and Quarry (Wales) Act and the National Infrastructure Committee for Wales. CRT's in Wales requires greater policy resource to advocate for changes to policies that directly impact our work and the coalfield communities we serve. As health and economy are devolved to Welsh Government a policy officer resource to research, analyze, and communicate with relevant stakeholders, including government officials, to influence policy decisions is required. This will support CRT in ensuring their work is supported by effective policies and that coalfield communities are not negatively impacted by policy changes.

Community Movement Cymru

CRT continues to support the emerging national Community Movement Cymru (CMC), a network of place-based community organisations, focusing on community action in Wales. Its objectives include being an independent, democratic, membership organisation with a primary aim of influencing policy making and enabling collaboration. This fits with the Senedd debate on Community Ownership which calls for a Community Strategy. CMC membership includes the Cwmni Bro Ffestiniog, PLANED, Action for Caerau and Ely (ACE), PAVS, Cwmni Bro, Together for Change, Faith in Families, Home-Start Cymru, Smart Money Cymru Community Bank. CMC is seeking funding to provide resource to drive the movement forward, including the development of community wealth building as a key policy area and the development of a programme of events focusing on community action supporting this policy area.

Our Funders and Supporters

The Trust is thankful to all our funders and supporters during 2024-25:





“Coalfields Regeneration Trust has supported Cymru Creation in many ways. Always happy to help with not just grants, but signposting us to external help and professionals who have provided information vital to the running of the charity. The staff are the best people you could wish to speak to.”

CYMRU CREATIONS



WALES@COALFIELDS-REGEN.ORG.UK

01495 367680



@CRTWALES



[COALFIELDS-REGEN.ORG.UK](https://www.coalfields-regen.org.uk)₂₉