



**COALFIELDS
COMMUNITY
GRANTS – WALES
GUIDANCE NOTES**



**Coalfields
Regeneration
Trust**

BUILDING PROSPERITY & OPPORTUNITY

Coalfields Regeneration Trust

Coalfields Regeneration Trust (CRT) was established in 1999 and is the only organisation dedicated to building prosperity and opportunity in former coal mining communities across the UK, representing over 5.5 million people. We are proud of our track record over the last 20 years and have delivered targeted programmes that have addressed many of the huge challenges caused by the closure of the coal industry. We are dedicated to supporting and improving the quality of life for the people living in former mining communities by helping them secure employment, increase skills and enhance their health and wellbeing. We also recognise the importance of retaining and developing local facilities and social enterprises which provide services to former mining communities.

Coalfields Community Grants Programme

The Coalfields Community Grants Programme in Wales can award grants from £500 up to £7,000 and is funded by the Welsh Government.

This programme is for community and voluntary organisations that can clearly demonstrate that a grant will impact positively on people living in the former coalfield communities of Wales.

Grants will be awarded for projects that can be completed within 12 months and can identify clear, positive and measurable outcomes.

Please note: We accept application materials in English or Welsh. Application materials are available in Welsh, if you require a copy please contact us.

Noder: Rydym yn derbyn deunydd cais yn y Gymraeg neu'r Saesneg. Mae deunydd cais ar gael yn y Gymraeg, cysylltwch â ni os ydych am gopi.





THEMES

Projects will need to meet one or more of the following themes to be eligible for support from the Community Grant Programme Wales:

- **Job creation and employment support** - projects that: create or sustain jobs within the community; support people into work; address barriers to work such as childcare or transport provision.
- **Skills and training** - projects that develop skills for people or provide qualifications.
- **Social enterprise development** - projects that support the start-up, growth and development of social enterprises.
- **Community buildings** - improvements which includes projects that reduce the energy costs of community buildings or reduce the carbon footprint of the building.
- **Tackling poverty** - projects that work with the most vulnerable people in coalfield communities to alleviate the effect of poverty.
- **Health and wellbeing** - projects that improve the quality of life for people living in coalfield communities with health problems, or projects that prevent negative impacts on health and wellbeing.





ELIGIBILITY

Your project must be based in an [eligible coalfield community](#) or be able to show clear and immediate benefits for an eligible coalfield community.

Projects must demonstrate how they will benefit the wider community and an organisation's members should not be the only beneficiaries.

Eligible Project Costs:

- Refurbishment costs – including property improvements and energy efficiency measures
- Purchasing equipment
- Training
- Rent/Venue hire for the project
- Promotion and marketing costs
- Staff costs*
- Insurance for the project
- New activities, services or products for social businesses.

*If you are seeking funding to support a job we would like to support posts paid at the [Real Living Wage](#) rate which is currently at £10.90 per hour for adults over 18. If increasing the salary in this way is problematic for your organisation please discuss this with us.



Because we are a Charity - Coalfields Regeneration Trust must comply with Charity Legislation and Charity Commission guidance and cannot fund any project that will place us outside such legislation and/or guidance.

Not eligible to receive support:

- An organisation can only hold one grant in any 12 month period.
- Organisations with total unrestricted income above £250,000 per annum.
- Individuals, private business, statutory bodies.
- Parish, town or community councils.
- “Friends of groups” where the end beneficiary will clearly be a statutory body.
- The activity cannot be a statutory responsibility or replacement of statutory provision.
- National organisations that do not have a registered office in Wales, or for those established elsewhere in the UK, do not provide activity or support solely in Wales.
- Projects set up to promote religious or political beliefs.
- Organisations that we believe are in a poor financial position or whose financial management systems are not in good order.
- Organisations without an appropriate governing document.

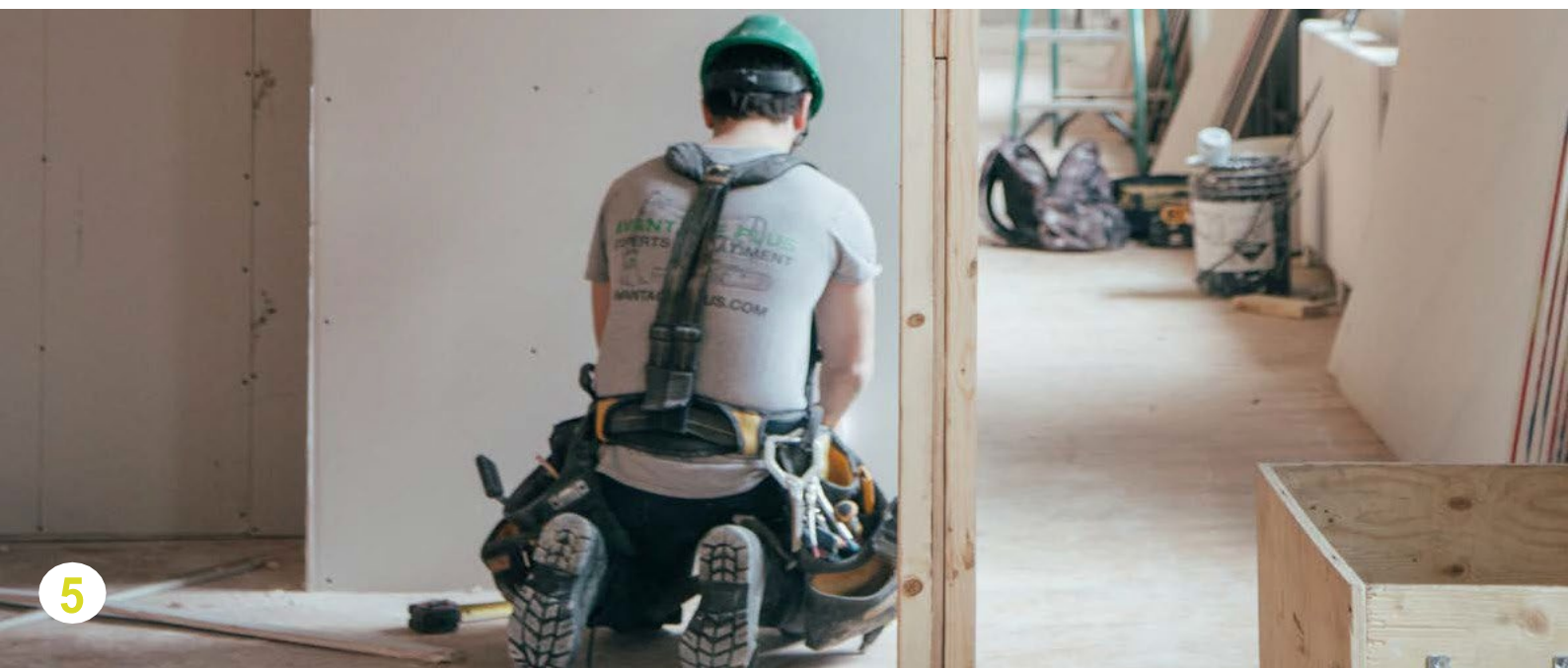


Costs we cannot fund (please note this list is not exhaustive):

- Project costs that the Trust has funded previously through the Community Grants or Bridging the Gap programmes (more support for the same activity or beneficiary group).
- Contribution towards a larger project with costs in excess of £150,000.
- Deficit or retrospective costs (in other words, costs you have committed to or owed to pay before your application was approved).
- Capital contingencies.
- The creation or maintenance of footpaths or car parks.
- The development of bars or bar areas for the purpose of increasing bar takings.
- Private pension schemes.
- Religious or political activities.
- Day trips.
- Overseas travel and expenses.
- Recoverable VAT.
- Animal welfare activities.
- General appeals for fundraising.
- School fees.
- Medical or research equipment.
- Bank or audit charges.
- Depreciation or amortisation.
- Fees for independent or external fundraisers.
- Debts including mortgage costs.
- Gifts and entertaining.
- Funding required to exclusively drawdown landfill tax credits.

The application form asks for a start date for your project. Please remember that the Trust takes approximately 12 weeks to make a decision on an application (when the application and all supporting documents have been provided).

We cannot pay for anything you commit to before we award the grant or for any activities that have already started.





APPLICATION PROCESS

There are two stages in completing a Community Grant application.

Enquiry

At this stage you must complete and submit an Enquiry Form. We would encourage you to contact us first to discuss your project. On receiving your Enquiry Form we will review it and give you feedback within 10 working days.

We will use the Enquiry Form information to determine if the project fits with the Coalfields Community Grant priorities and appears to be eligible for Trust funding. We will contact you and update you on the outcome of the Enquiry Form review. If we think we are unlikely to fund your project, we will explain why.

Application Form

If we think that we could support your project, we will provide you with an Application Form. Progress to the application stage does not mean a decision has been made to give a grant. We might also suggest that you provide further information on community need, evidence of demand or to send other information with your Application Form. If you decide to apply you will have up to 3 months to complete the Application Form along with any additional information we ask you to complete.

As part of our assessment of the project we will assess whether a grant meets EU State Aid/UK Subsidy Control requirements. This may require us to ask you for further information on your project, organisation and other funding received to date.

For further information or advice please visit our website:

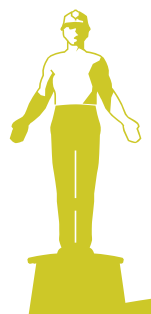
www.coalfields-regen.org.uk

or contact us:

01495 367 680

wales@coalfields-regen.org.uk

The Coalfields Regeneration Trust is a Charity registered in England and Wales (No. 1074930), a Charity registered in Scotland (No. SCO39277) and a Company Limited by Guarantee registered in England and Wales (No.3738566). The Registered Address is 1 Waterside Park, Valley Way, Wombwell, Barnsley, South Yorkshire, S73 0BB. Telephone 01226 270800.



The Coalfields Regeneration Trust
Aneurin Bevan House
40 Castle Street Tredegar
NP22 3DQ

wales@coalfields-regen.org.uk
01495 367680

Publication: V11



**Coalfields
Regeneration
Trust**

BUILDING PROSPERITY & OPPORTUNITY



Llywodraeth Cymru
Welsh Government

